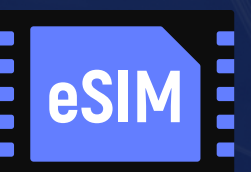




sensorise
connect & serve

INTELLIGENT M2M CONNECTIVITY





sensorise
connect & serve



Who we are?

Sensorise is the market leader in M2M Services, supplying end-to-end solutions in Remote and Lifecycle Management of eSIM and IoT Devices

Our Products and Services are always “Standards aware”, ensuring standards compliance





sensorise
connect & serve

About Sensorise

Enabling M2M adoption & proliferation

Registered M2M service
provider

Industry Leadership

Quality of Service

Pioneers of eSIM
technology in India

Subsidiary of
Rosmerta Technologies Group

Telco, technology & device
agnostic M2M services

Fully Standards Compliant

Trusted by more than
100 OEMs for M2M services

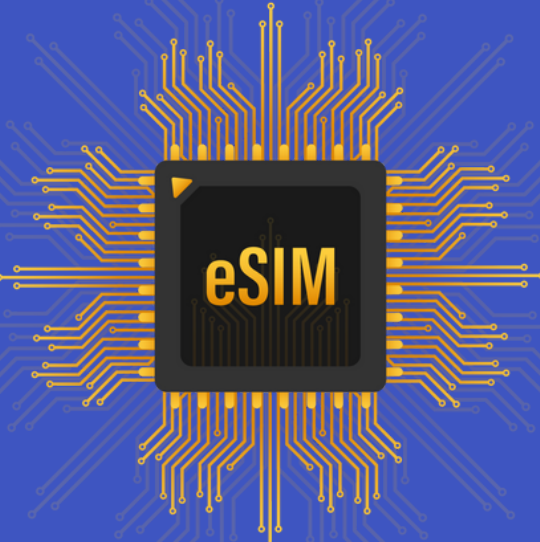
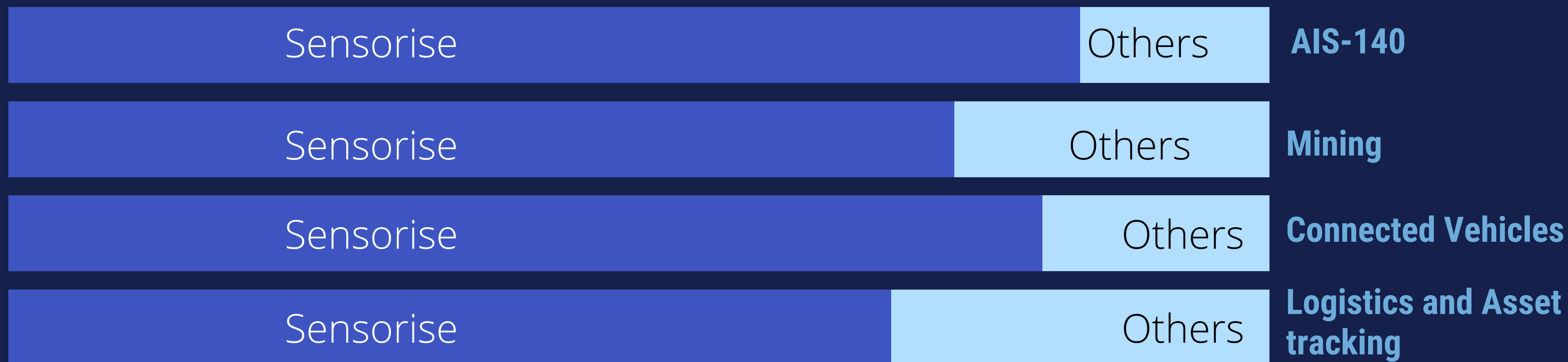
Award winning M2M/ IoT
services





sensorise
connect & serve

Market Presence



Deployed Card Base

1.6 M

- Diligent contributor in “Make In India” and “Swachh Bharat Mission”
- Successfully deployed IoT based Customer Feedback Device with remote features like portal, dashboard, analytics & field support in different states of India viz. Delhi NCR, Haryana and Kerala





sensorise
connect & serve

Our unique proposition

Telecommunications

Security

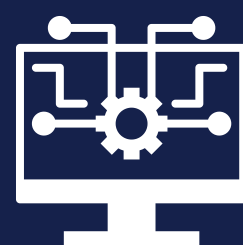
Messaging

Over-the-air management

Portals & analytics

Machine Learning models

In-house
R&D team
with proven
competency



End-to-End
Service
Providers

hardware

Embedded Software

Portals

Analytics

Field deployment

Support





sensorise
connect & serve

QoSim
always on


SenseLCM
Life Cycle Management


SenseTouch

Main Business Lines

- Sensorise QoSim
- Sensorise SenseLCM
- SenseTouch KYC
- QoSec : End-to-end security
- SenseMatic
- SenseIT CFD & MAID



Intelligent M2M connectivity

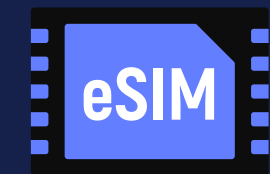




sensorise
connect & serve

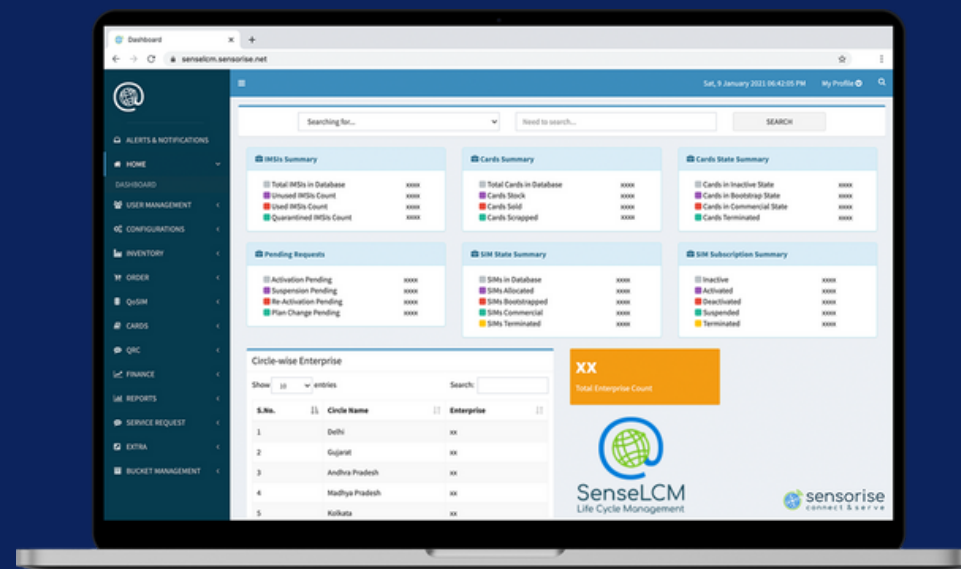
SenseLCM

Cloud-based portal with
powerful capabilities for
Lifecycle Management for
Embedded SIM &
Subscriptions





sensorise
connect & serve



SenseLCM

SELF-CARE



QOS CAPABILITY



ORDER & INVOICE



**SECURITY/
MESSAGING**



**CARD
MANAGEMENT**



API



**ACCOUNT
SECURITY**



**USAGE &
REPORTING**

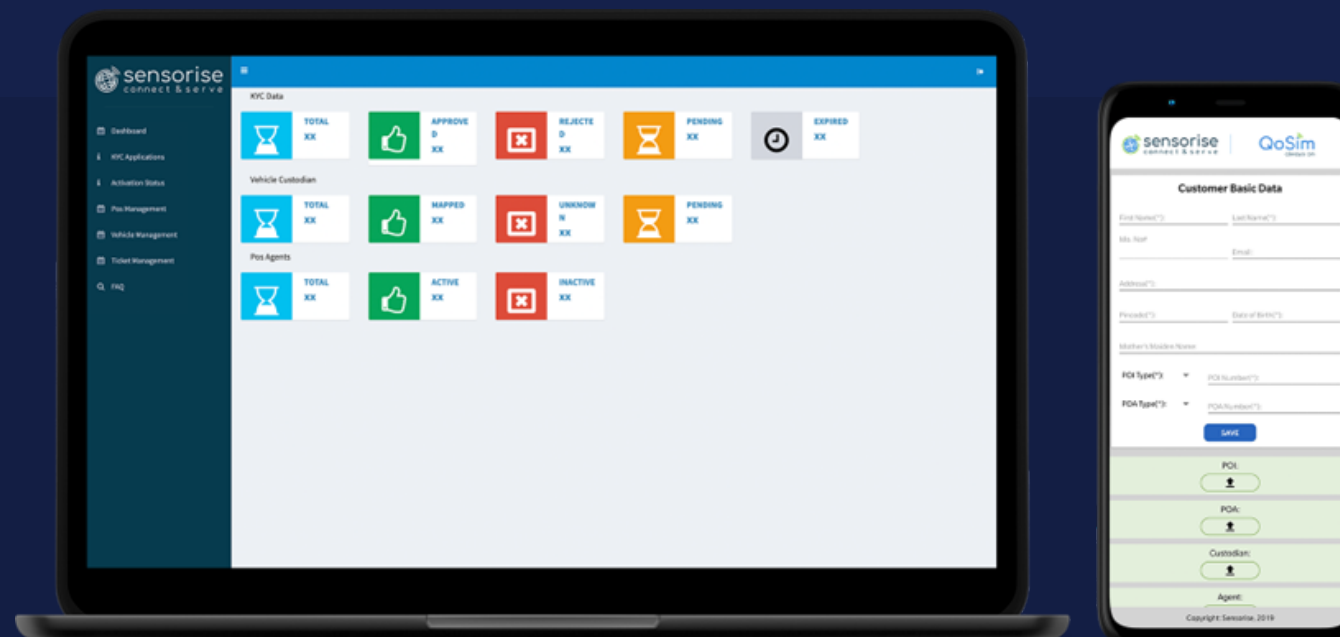


**KYC &
COMPLIANCE**





sensorise
connect & serve



SenseTouch KYC

App for customer registration & verification

End-to-end Solution for
secure registration &
verification of IoT clients as
per know-your-customer
(KYC) norms

Compliant with DoT Guidelines & TRAI
Recommendations

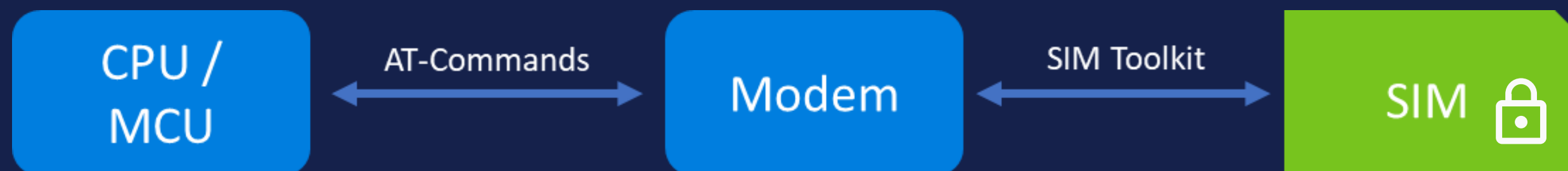
“Custodian – Machine / Device – SIM” Triplet verification
using tamper resistant secure element and
authentication

Machine eKYC for any M2M Use
case, SIM agnostic

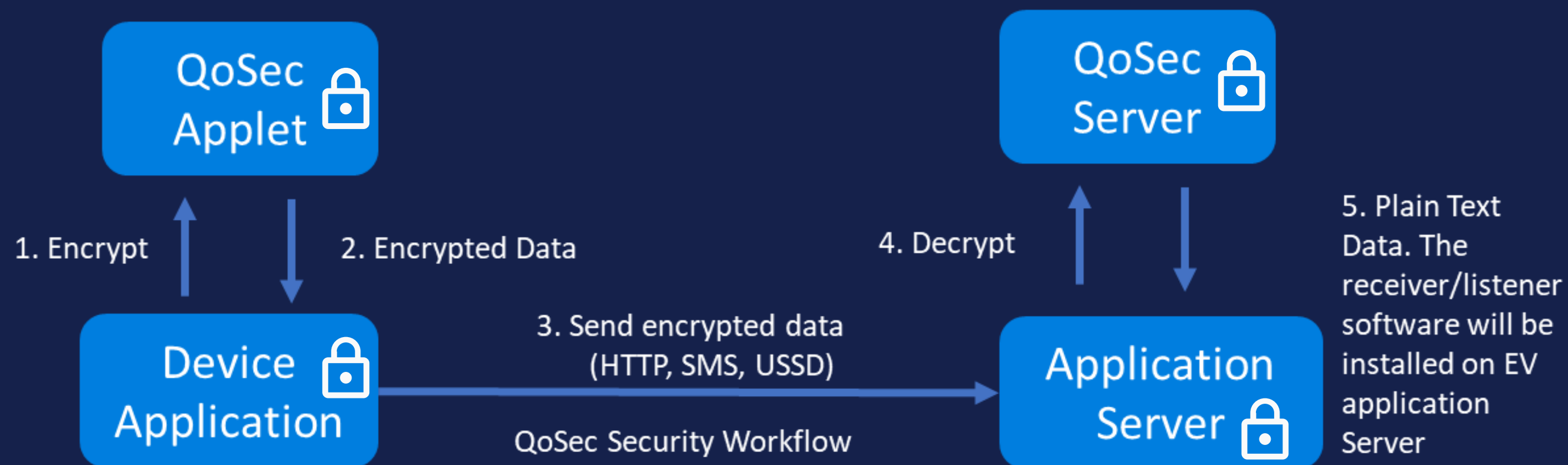
Available in Android and iOS versions

eSIM

QoSec : End-to-end Security



Empowers any GPRS Modem based Device with tamper resistant security using the frugal QoSec



Secure Element within QoSim, i.e. end-to-end IoT Security Solution that converts the operator SIM into a Secure Element

SenseIT - CFD & MAID



- Controller & GSM Module based Customer Feedback Device & portal
- SenseIT Multi-Access IoT Device and portal for SCADA

Industry Use-cases



sensorise
connect & serve





sensorise
connect & serve

Partners & Customers



LOW



Awards & Accolades



**ET Telecom
Award 2020 -
Best IOT
Service
Provider**



**Bronze Stevie
Winner 2020 – End
to End Connectivity
Service Provider
for Machine
Critical Use Case
(IoT/ M2M)**



**India
Procurement
Leadership
Forum & Awards
2020 - Best Use of
Technology by a
Startup**



**13th CMAI ICT
World
Communication
Summit &
Awards 2020 –
Excellence in
IoT for the year**

Contribution in Standards & Policy

Author

- Co-Author, Technical Report on Intelligent Transport Systems, Vehicle to Vehicle Communications and Embedded SIMs (Nov, 2015)
- Co-Author, ITU Y-Series Supplement 53, Digital Identity and eKYC for Automotive Industry (Published, Dec 2018)
- Lead Author of the M2M Security Workgroup, Recommendations for M2M Security (Released, Jan 2019)
- Co-Author, ITU Proposal on Open Bootstrap Framework (Mar, 2019)

Editorial

- Group
- Technical Report on Communication Technologies in M2M / IoT (TEC, May 2015)
- M2M Gateway & Architecture (TEC, May 2015)
- M2M Enablement in Safety & Surveillance System (TEC, Nov 2015, Released by Secretary, Telecoms)
- ICT deployment and strategies for Smart Cities (TEC, Jul 2016)





sensorise
connect & serve

THANK YOU

Contact us: sales@sensorise.net

sensorise.net

eSIM