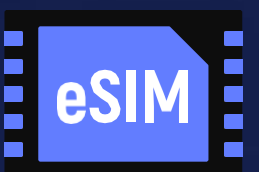




sensorise  
connect & serve

# INTELLIGENT M2M CONNECTIVITY





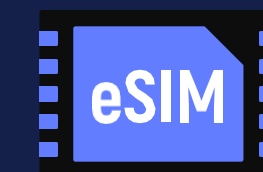
sensorise  
connect & serve



# Who we are?

Sensorise is the market leader in M2M Services, supplying end-to-end solutions in Remote and Lifecycle Management of eSIM and IoT Devices

Our Products and Services are always “Standards aware”, ensuring standards compliance





sensorise  
connect & serve

# About Sensorise

Enabling M2M adoption & proliferation

Registered M2M service  
provider

Industry Leadership

Quality of Service

Pioneers of eSIM  
technology in India

Trusted by more than  
100 OEMs for M2M services

Telco, technology & device  
agnostic M2M services

Fully Standards Compliant

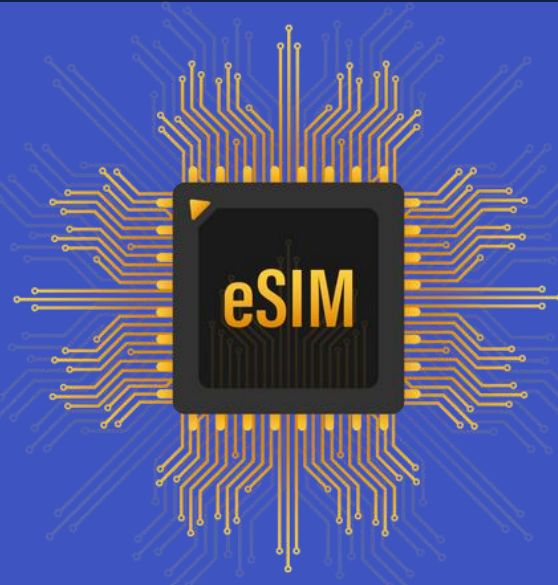
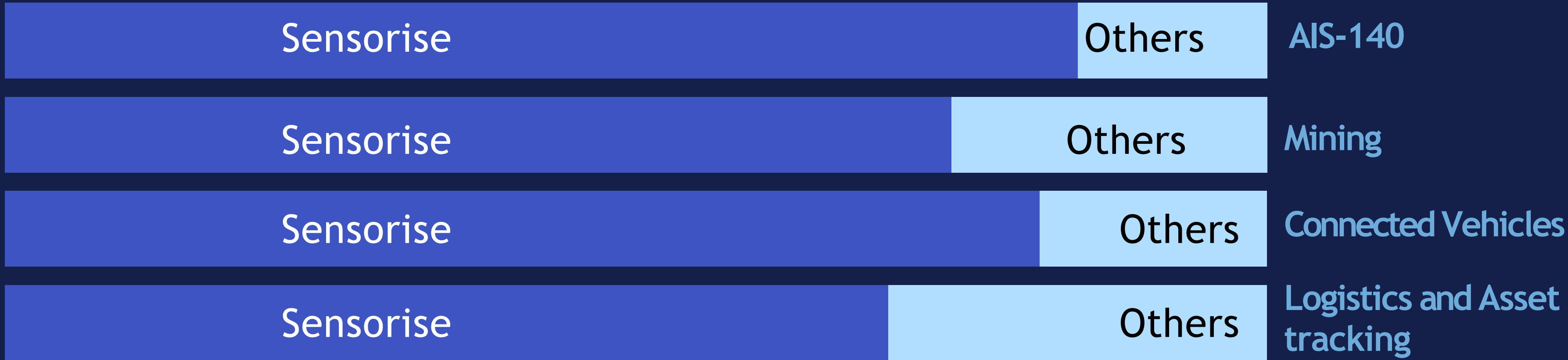
Award winning M2M/ IoT  
services





sensorise  
connect & serve

# Market Presence



Deployed Card Base

1.6 M

- Diligent contributor in “Make In India” and “Swachh Bharat Mission”
- Successfully deployed IoT based Customer Feedback Device with remote features like portal, dashboard, analytics & field support in different states of India viz. Delhi NCR, Haryana and Kerala







sensorise  
connect & serve

# Our unique proposition

- Telecommunications
- Security
- Messaging
- Over-the-air management
- Portals & analytics
- Machine Learning models

In-house R&D team with proven competency



End-to-End Service Providers



- hardware
- Embedded Software
- Portals
- Analytics
- Field deployment
- Support





sensorise  
connect & serve

QoSIm  
always on

  
SenseLCM  
Life Cycle Management

  
SenseTouch

# Main Business Lines

- Sensorise QoSIm
- Sensorise SenseLCM
- SenseTouch KYC
- QoSec : End-to-end security
- SenseMatic
- SenseIT CFD & MAID

# Intelligent M2M connectivity





sensorise  
connect & serve

# SenseLCM

Cloud-based portal with powerful capabilities for Lifecycle Management for Embedded SIM & Subscriptions







sensorise  
connect & serve

**SELF-CARE**



**QOS CAPABILITY**



**ORDER & INVOICE**



**SECURITY/  
MESSAGING**



**CARD  
MANAGEMENT**



**API**



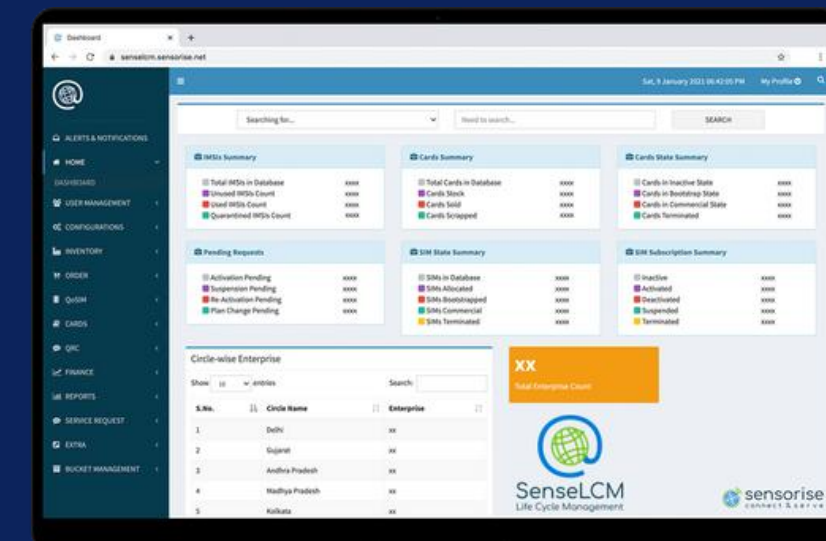
**ACCOUNT  
SECURITY**



**USAGE &  
REPORTING**



**KYC &  
COMPLIANCE**

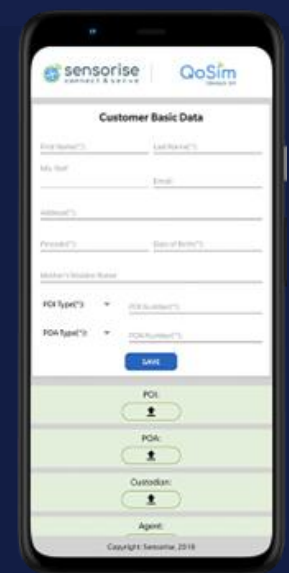
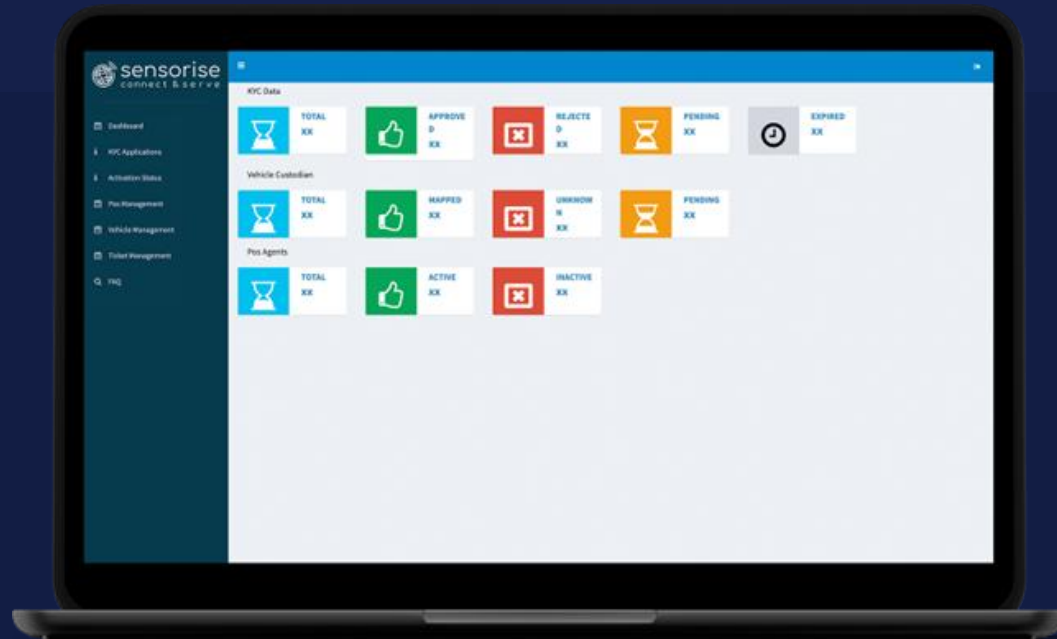


# SenseLCM





sensorise  
connect & serve



# SenseTouch KYC

App for customer  
registration &  
verification

End-to-end Solution for  
secure registration &  
verification of IoT clients as  
per know-your-customer  
(KYC) norms

Compliant with DoT Guidelines & TRAI  
Recommendations

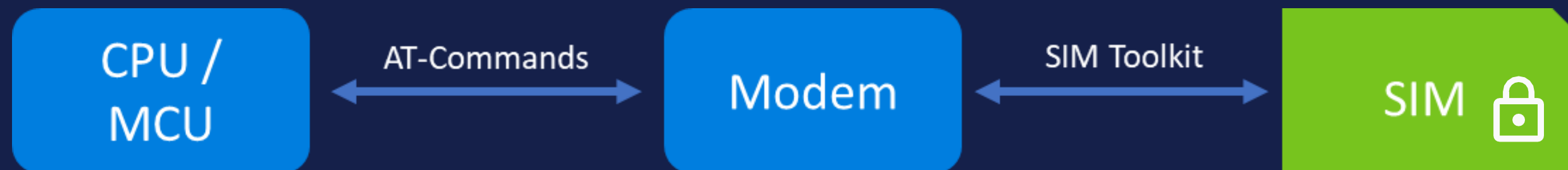
“Custodian – Machine / Device – SIM” Triplet verification  
using tamper resistant secure element and  
authentication

Machine eKYC for any M2M Use  
case, SIM agnostic

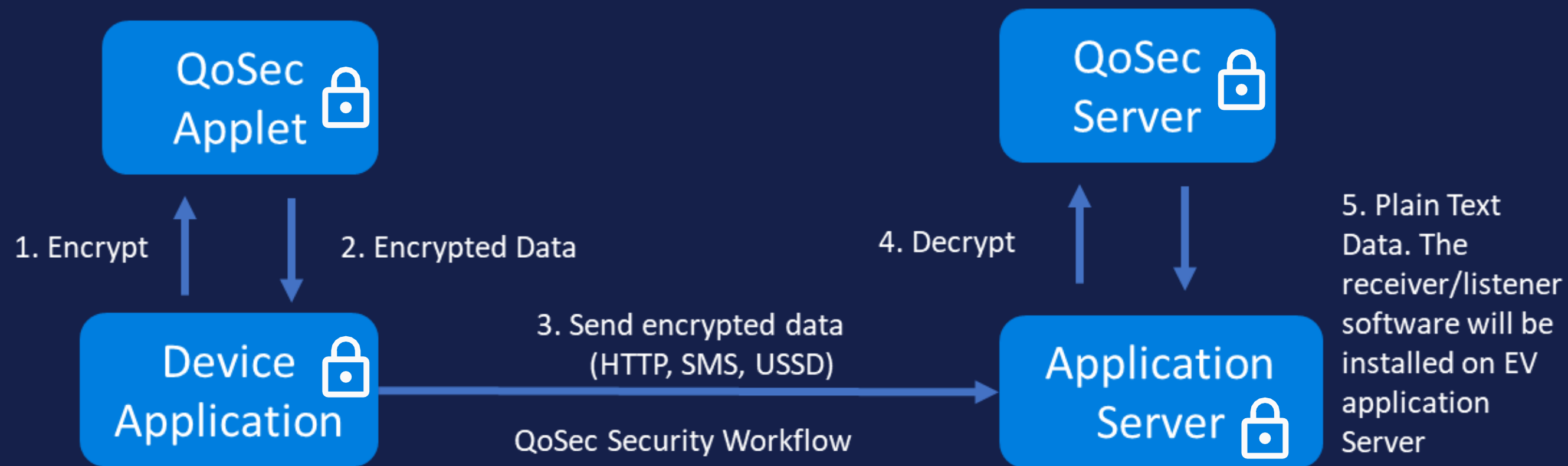
Available in Android and iOS versions



# QoSec : End-to-end Security



Empowers any GPRS Modem based Device with tamper resistant security using the frugal QoSec



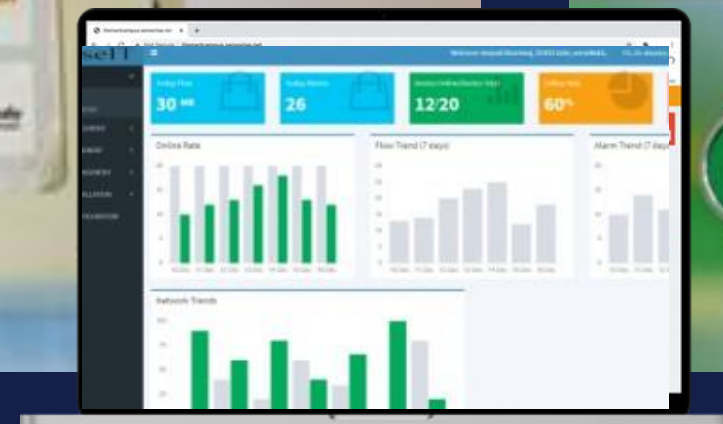
Secure Element within QoSim, i.e. end-to-end IoT Security Solution that converts the operator SIM into a Secure Element



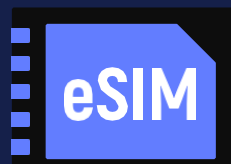
# SenseIT - CFD & MAID



sensorise  
connect & serve



- Controller & GSM Module based Customer Feedback Device & portal
- SenseIT Multi-Access IoT Device and portal for SCADA





# Industry Use-cases



sensorise  
connect & serve





sensorise  
connect & serve

# Partners & Customers

The graphic displays a central hub of icons representing various IoT and connectivity services, surrounded by logos of partners and customers. The logos are arranged in a grid-like pattern around the central hub.

**Partners & Customers Logos:**

- Top Left:** BSNL, airtel, indosat, VI, JT, bics, top connect, GD, EASTCOMPEACE, transatel, ST, IDEMIA, sensing & control.
- Top Right:** TELTONIKA, Trimble, Rosmeria Autotech Pvt. Ltd., iTriangle, eTRANS SYSTEMS, ARAI, UNO MINDA, WABCO, Skylab Technologies, T&E, KPIT, NIPPON AUDIOIRONIX LTD., ACCOLADE, AUTOCOP, ATLANTA, ROADPOINT, ARYA OMNITALK, ACCORD, National Meter Mfg. Co.
- Bottom Left:** Mahindra ELECTRIC, TATA TATA MOTORS, FORCE MOTORS, DAIMLER, BMW, ASHOK LEYLAND, SWARAJ MAZDA, Ford Go Further, Zoomcar, BHARATBENZ.
- Bottom Right:** RDM ENTERPRISES GROUP, BNB, GPSINDIA, EL-ACHSOL, AVLView.com, Lynkit, qdnet, Transight, INTELICAR, MopGen Vehicle Tracking Solution, LEMS, GRL ENGINEERS, MARK Electronics Corporation, TrakMate, ALTIUS TECHNOLOGIES, TEDI INDIA, INTANGLES.

LOW



# Awards & Accolades



sensorise  
connect & serve



**ET Telecom  
Award 2020 -  
Best IOT  
Service  
Provider**



**Bronze Stevie  
Winner 2020 – End  
to End Connectivity  
Service Provider  
for Machine  
Critical Use Case  
(IoT/ M2M)**



**India  
Procurement  
Leadership  
Forum & Awards  
2020 - Best Use of  
Technology by a  
Startup**



**13th CMAI ICT  
World  
Communication  
Summit &  
Awards 2020 –  
Excellence in  
IoT for the year**



# Contribution in Standards & Policy

## Author

- Co-Author, Technical Report on Intelligent Transport Systems, Vehicle to Vehicle Communications and Embedded SIMs (Nov, 2015)
- Co-Author, ITU Y-Series Supplement 53, Digital Identity and eKYC for Automotive Industry (Published, Dec 2018)
- Lead Author of the M2M Security Workgroup, Recommendations for M2M Security (Released, Jan 2019)
- Co-Author, ITU Proposal on Open Bootstrap Framework (Mar, 2019)

## Editorial

- Group
- Technical Report on Communication Technologies in M2M / IoT (TEC, May 2015)
- M2M Gateway & Architecture (TEC, May 2015)
- M2M Enablement in Safety & Surveillance System (TEC, Nov 2015, Released by Secretary, Telecoms)
- ICT deployment and strategies for Smart Cities (TEC, Jul 2016)







sensorise  
connect & serve

# THANK YOU

Contact us: [sales@sensorise.net](mailto:sales@sensorise.net)

sensorise.net

eSIM